



## Window Fall Protection

This Tip Sheet reflects code requirements of the 2018 International Residential Code (IRC) and the 2018 International Building Code (IBC) with Washington State Amendments.

### Requirements

- Where the sill height above finished grade on the exterior side of an operable window opening is greater than 72 inches, and the sill height above the finished floor on the interior side of the operable window opening is less than 24 inches (or 36 inches in dwelling units regulated by the IBC) (see Figure 1), then window fall protection shall be provided by one of the following (R312.2.1, R312.2.2; IBC 1015.8):
  1. Operable windows with openings that, when in their largest opened position, will not allow the passage of a 4-inch sphere (see Figure 2).
  2. Operable windows that are provided with window fall prevention devices that comply with ASTM F 2090 (see Figure 2).
  3. Operable windows that are provided with opening control devices that comply with ASTM F 2090 (see Figure 2). (Note: When installed on required emergency egress windows, these devices must not reduce the net clear opening to less than the minimum required size or dimensions; see Tip Sheet 10 for more information.)
  4. In dwelling units regulated by the IBC where the sill height of an operable window above exterior finished grade is more than 75 feet, provide window fall prevention devices complying with ASTM F 2006 (see Figure 2).

### Standards

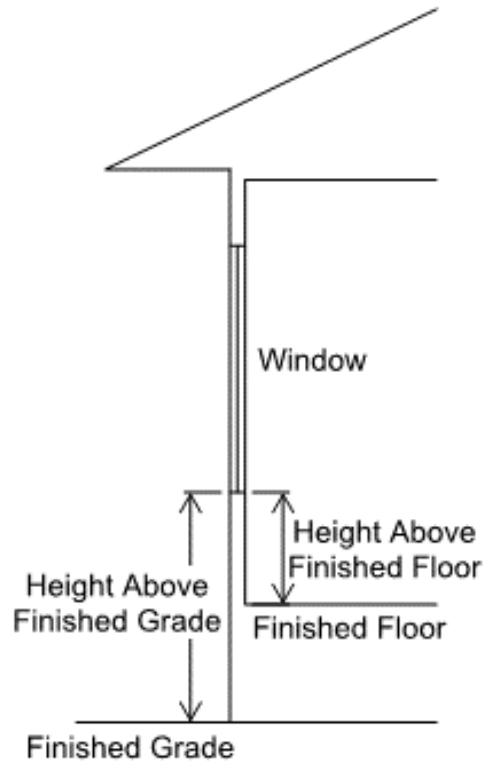
- ASTM F 2006: Standard Safety Specification for Window Fall Prevention Devices for Non-Emergency Escape (Egress) and Rescue (Ingress) Windows
- ASTM F 2090: Specification for Window Fall Prevention Devices with Emergency Escape (Egress) Release Mechanisms.

### Egress Windows

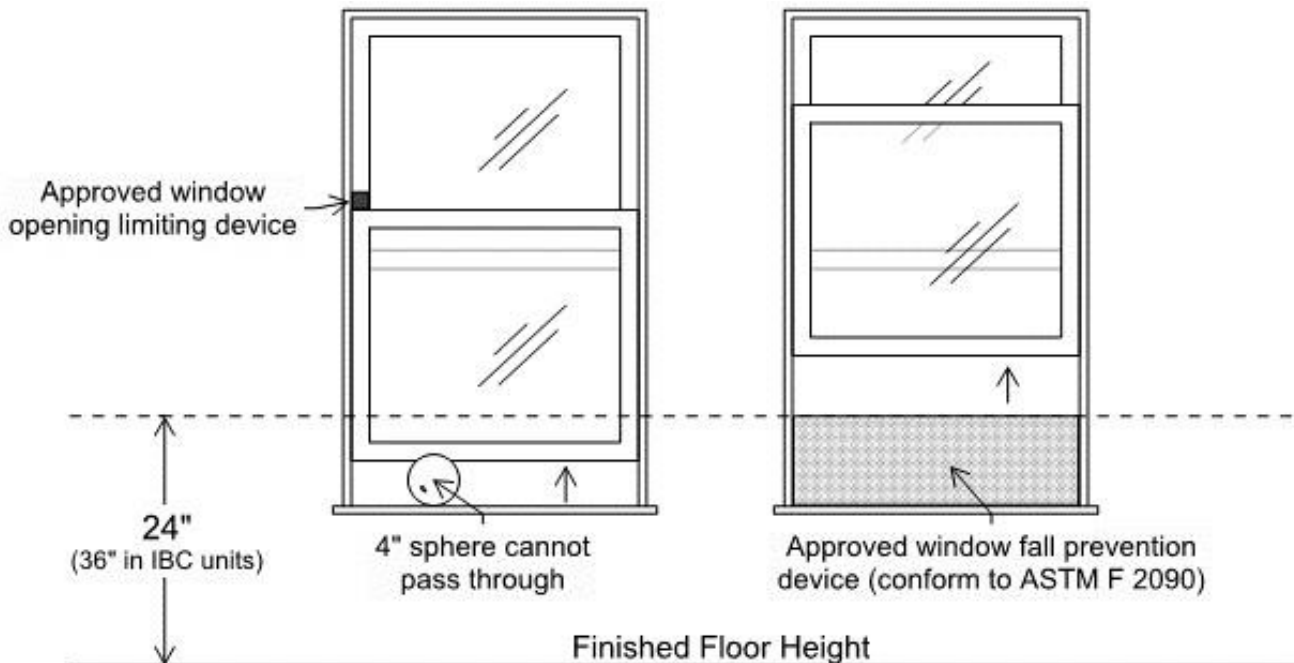
- Egress windows must meet minimum size requirements. Minimum clear opening size of 5.7 square feet (5 square feet on the grade level) with minimum clear height of 24 inches and minimum clear width of 20 inches.
- For additional emergency egress window requirements refer to Tip Sheet 10.

### Safety Glazing

- For additional safety glazing requirements refer to Tip Sheet 19.



**Figure 1:** Sill height above finished grade on the exterior side of an operable window opening



**Figure 2:** Window fall protection



**Table 1: Summary of Requirements**

<b>Exterior Sill Height Above Finished Grade</b>	<b>Interior Sill Height Above Finished Floor</b>	<b>Can be used for Egress</b>	<b>Safety Glazing Required</b>	<b>Fall Protection Required</b>
72 inches or less	Greater than 44 inches	No	-	No
	Between 18 and 44 inches	Yes	-	No
	Sill below 18 inches, top of window above 36 inches, and individual pane of glass is greater than 9 square feet	Yes	Yes	No
Greater than 72 inches	Greater than 44 inches	No	-	No
	Between 24 and 44 inches (IRC dwelling units)	Yes	-	No
	Less than 24 inches (IRC dwelling units)	Yes	-	Yes
	Between 36 and 44 inches (IBC dwelling units)	Yes	-	No
	Less than 36 inches (IBC dwelling units)	Yes	-	Yes
	Sill below 18 inches, top of window above 36 inches, and individual pane of glass is greater than 9 square feet	Yes	Yes	Yes
Greater than 75 feet	Less than 36 inches (IBC dwelling units)	No	-	Yes