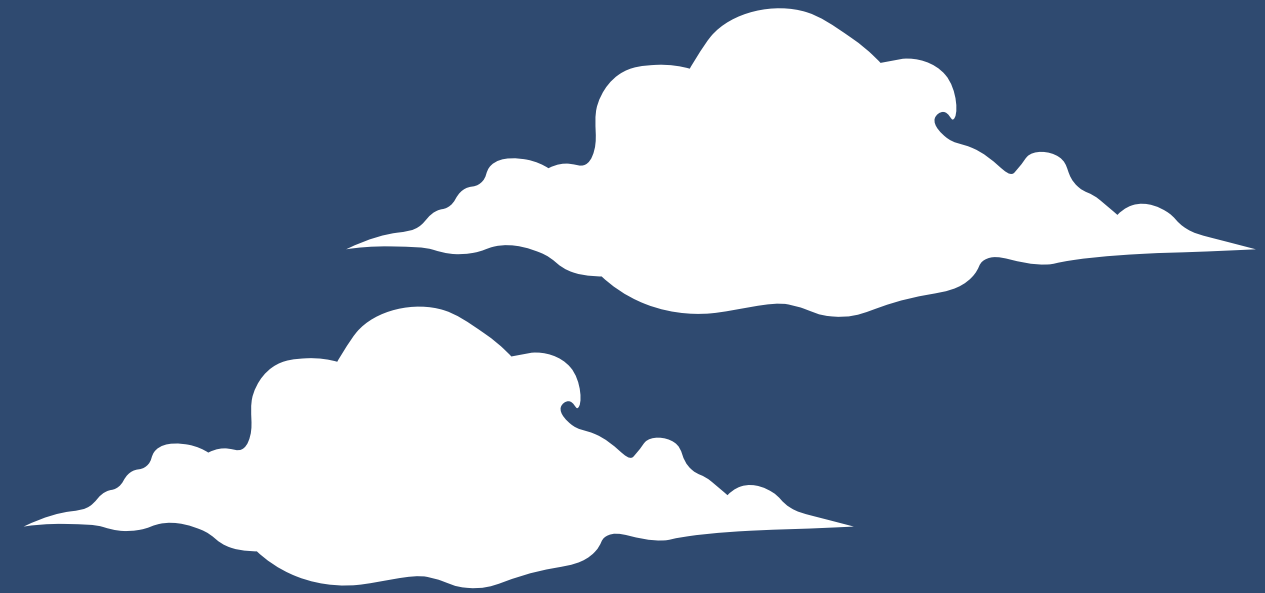


HOW LAKE CHELAN GROWS:

Envisioning Our Community's Future



AGENDA

01

**Welcome &
Introductions**

02

**Why We Plan for
Growth**

03

**What is the
Comprehensive
Plan and its
Elements?**

04

Next Steps



LAKE CHELAN'S COMMUNITY VALUES

In Lake Chelan, our Community Values serve as the foundation of our strategic planning, ensuring that every policy, program, and investment is rooted in what matters most to our community.



HOW IT ALL WORKS TOGETHER

Lake Chelan Community Value	Comprehensive Plan Element	City of Chelan Guiding Principle	City of Chelan Strategic Initiative
Treasure Lake Chelan	<ul style="list-style-type: none"> · Shoreline Protection · Land Use · Climate Change & Resiliency 	<ul style="list-style-type: none"> · Healthy & Sustainable · Thriving & Connected 	<ul style="list-style-type: none"> · Manage Growth · Strengthen Strategic Partnerships
Embrace a Small-Town Way of Life	<ul style="list-style-type: none"> · Housing · Land Use · Rural Development 	<ul style="list-style-type: none"> · Accessible & Welcoming · Thriving & Connected 	<ul style="list-style-type: none"> · Diversify Housing Options · Increase Community Engagement
Cherish Natural Beauty	<ul style="list-style-type: none"> · Parks & Recreation · Climate Change & Resiliency · Land Use 	<ul style="list-style-type: none"> · Healthy & Sustainable · Visionary & Strategic 	<ul style="list-style-type: none"> · Enhance Youth and Family Well-being · Modernize Resources
Pride in Agricultural Heritage	<ul style="list-style-type: none"> · Rural Development · Economic Development · Land Use 	<ul style="list-style-type: none"> · Healthy & Sustainable · Thriving & Connected 	<ul style="list-style-type: none"> · Establish a Long-Range Economic Strategy · Manage Growth
Support Locally-Owned Businesses	<ul style="list-style-type: none"> · Economic Development · Land Use 	<ul style="list-style-type: none"> · Thriving & Connected · Visionary & Strategic 	<ul style="list-style-type: none"> · Establish a Long-Range Economic Strategy · Strengthen Strategic Partnerships
Flourish with Safety and Support	<ul style="list-style-type: none"> · Capital Facilities · Utilities · Transportation 	<ul style="list-style-type: none"> · Accessible & Welcoming · Healthy & Sustainable 	<ul style="list-style-type: none"> · Modernize Resources · Enhance Youth and Family Well-being

WHAT GUIDES GROWTH?

Growth can happen at many different speeds — as we've seen in the years following COVID. While the City and County *can't* control how fast Chelan grows, we *can* plan thoughtfully for that growth to ensure our community stays livable, resilient, and true to its character.

The guiding document that guides growth is called our **Comprehensive Plan**. It's a state requirement for all cities and counties, and it plans for growth across a 20-year time horizon. The Comp Plan, as it's known, is made up of specific sections addressing different aspects of the community that must be considered as we grow. We call those sections "Elements."



WHY DO WE NEED TO PLAN FOR GROWTH?

In Washington State, cities must comply with the Growth Management Act (GMA) a Washington State law passed in 1990 to help communities plan for the future. It's basically a set of rules that say:

“Let's be smart about how we grow.”

Growth respects private property rights, and the ability for property owners to utilize their land in ways permitted by zoning and the comprehensive plan.



WHAT CAN'T THE CITY OR COUNTY DO TO MANAGE GROWTH?

- *Can't stop people from moving in*
- *Can't control births or household sizes*
- *Can't deny legal development*
- *Can't control the economy*
- *Can't override state/federal laws*
- *Can't force where people build or live*



WHAT ARE THE COMP PLAN ELEMENTS?

1. Land Use
2. Housing
3. Transportation
4. Utilities
5. Capital Facilities
6. Climate Resilience
7. Parks & Recreation
8. Rural*

**Chelan County Element*



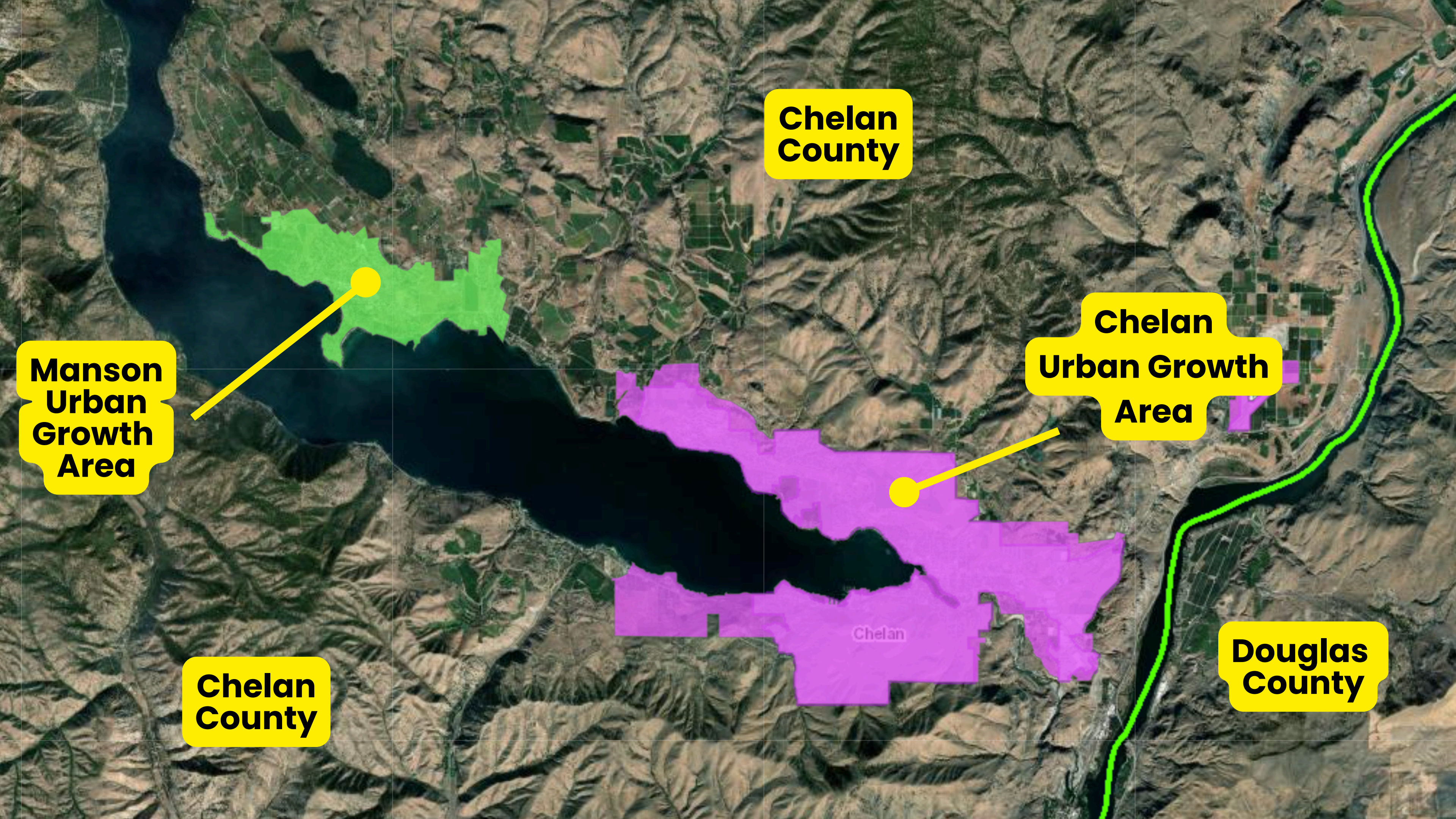
LAND USE ELEMENT

Designates the general distribution and location of land uses (residential, commercial, industrial, public, etc.). By agreement, Chelan County partners with its cities to be the lead agencies for zoning inside their respective Urban Growth Areas, allowing Cities to plan for ultimate growth just outside their City Limits.

Addresses population growth, housing capacity, and zoning consistency.

Zoning implements the comp plan by organizing growth throughout the City and County.





**Chelan
County**

**Manson
Urban
Growth
Area**

**Chelan
Urban Growth
Area**

**Chelan
County**

**Douglas
County**

HOUSING ELEMENT

Identifies current and projected housing needs and population allocation. The County takes steps to distribute that population growth across the Urban Growth Areas.

This element provides goals and policies for affordable housing, housing types, and density.

Housing Need Allocations by Income Level and Type										
Urban Growth Area	Adjusted Population Allocation	Total	Permanent Housing Needs by Income Level (% of Area Median Income)							Emergency Housing Needs (Temporary)
			0-30%		>30-50%	>50-80%	>80-100%	>100-120%	>120%	
			Non-PSH	PSH						
Manson UGA	3.37%	355	43	31	60	59	29	26	107	10
Chelan UGA	3.43%	361	43	32	61	60	29	27	109	10

TRANSPORTATION ELEMENT

Supports land use element and outlines transportation infrastructure needs. We are required to plan for multi-modal transportation, which includes pedestrian, bicycle, and other forms of alternative transportation.

Transportation Priorities Identified in the Fall 2024:

01

**Easing Traffic
Congestion**

02

**Emergency
Evacuation Routes**

03

**Enhancing Ped
Safety & Walkability**

04

**Safer Access to
Schools**

05

**Improving
Accessibility for an
Aging Population**

06

**Preservation of
Existing Pavement
Surfaces**

07

**Creating New
Walking and
Biking Pathways**

08

**Beautifying
Streets**



UTILITIES ELEMENT

Describes existing and proposed utilities (electricity, water, sewer) and supports our Water and Sewer comprehensive plans, which governs how we plan for the future of those systems.

**52%
Capacity**

Water (City of Chelan):

Treatment plant designed max = 6.7 million gallons per day

Treatment plant current max daily demand = approx. 3.5 million gallons per day

**37%
Capacity**

Wastewater (City of Chelan, LCSD, LCRD):

Treatment plant designed max = 2.94 million gallons per day

Treatment plant current max daily = approx. 1.1 million gallons per day

57.21 Miles of Collection Main Including LCSD



CAPITAL FACILITIES ELEMENT

This includes an inventory of public facilities (schools, parks, water/sewer systems, etc.) and the long term financing plan for how the city will address growth and capital projects.

A capital project is a large scale project like water or sewer lines, paving a major roadway, upgrading a sewer line or making improvements to our parks. It also includes things like fire stations, schools, police stations, airports and other facilities.



CLIMATE RESILIENCE GOALS AND POLICIES

Throughout our planning document, we'll include goals and policies for how we plan and respond to a changing climate.

Top 5 Climate Threats Residents are Concerned About:

- | | | | | |
|-----------------|-------------------------------|--------------|----------------|-------------------------|
| 01 | 02 | 03 | 04 | 05 |
| <hr/> | <hr/> | <hr/> | <hr/> | <hr/> |
| Wildfire | Lake Water
Quality | Smoke | Drought | Extreme
Heat |



PARKS & RECREATION ELEMENT

Inventory and plan for parks, open space, and recreational facilities.

Last year the City adopted its Parks, Recreation, and Open Space (PROS) Plan.

The PROS Plan informs and supports the Parks and Recreation Element of the Comprehensive Plan. While the Comp Plan gives a high-level policy framework, the PROS Plan dives into the details—like exactly what facilities are needed, where they should go, and how they'll be funded.



RURAL ELEMENT

Guides how land in rural areas (the countryside outside cities and urban growth areas) should be used. It's all about finding the right balance between preserving rural character and allowing some level of growth and development.



TIME FOR YOUR INPUT!

We've compiled lots of data so far regarding Community Values, Transportation, and Climate, but this is just the beginning!

Throughout the next year we'll have lots of opportunities for our community to share their thoughts.

Which element are you most interested in learning about?





THANK YOU!

