



# Chelan Gorge Park

## 2025 Development Plan



# The Vision

While the park has amazing views and the potential to be an asset to the community, years of deferred maintenance and general neglect have contributed to piles of rubbish and green waste, graffiti, dead trees, and homeless encampments, making the space seem unsafe, uninviting, and almost abandoned. Being the only athletic facility outside of the school district system, there are often no other options for field sports and there are few other amenities that would otherwise typically be offered by a neighborhood park. The infrequent use by park-goers and a general lack of eyes on the park further reduce the informal social controls of other well visited spaces. Essentially, the cycle of underuse and misuse makes the park in its current state an unwelcome place to be. This development plan aims to change all of that.

This long-range development plan represents a great opportunity to stop the current trajectory into decline and instead strengthen the future of the park as a lively neighborhood feature. The athletic facility updates offer a much-needed programming boost, while increases in neighborhood scale amenities such as play areas for all age ranges, walking loops, fitness stations, a community garden, dog park and community gathering spaces provide passive recreational attractions, and the opportunity to admire the natural beauty of the surrounding views.

The Chelan Parks PROS plan quotes a passage from a RAND Corporation study on how best to activate neighborhood parks: *“Neighborhood parks that are well-designed with diverse facilities and targeted programming can play a critical role in promoting moderate-to vigorous physical activity. But most neighborhood parks today aren’t designed or programmed to successfully do that and are therefore underutilized. Relatively modest investments can improve neighborhood park conditions to encourage physical activity for everyone, regardless of age, gender, or income.”*

We’ve taken this to heart and offer a robust program of both active and passive attractions that complement the neighborhood adjacencies and bolster the amenities within the overall park system all with some of the most spectacular views in Chelan!





**Chelan Gorge Park** is an exciting opportunity to add additional recreational opportunities to Chelan's vibrant system. The current park consists of aged ballfields, restrooms, concessions, tot play area, horseshoe pits, and Veterans of Foreign Wars building. The park is wonderfully situated, with downtown parks and shops close by, amazing views to the surrounding buttes, Chelan River, Lake Chelan, and Chelan Dam, and established partnerships with the Chelan Valley Hope Food Bank and Chelan Senior Center. Highlighting these opportunities, as well as a rich history, the park has the potential to transform into an activated neighborhood park with tournament capable ballfields. The proposed program will increase activity at the park, invite a more diverse group of users, and foster a vibrant and well-loved park within the local community.



The existing park aerial view



The **Development Plan** is shaped by reconfiguring the three existing baseball fields to create four little league 12U fields with movable fences to accommodate tournaments and increasing demand. Sports lighting and foul-ball netting are integrated into the design.

The concessions building and restroom become centralized with good sightlines throughout the park, parking is streamlined, and the tot play is replaced with a play area befitting one of the largest parks in the area! Paths loop around and through the park, with nodes along the way that celebrate views and provide opportunities for pause or activity.

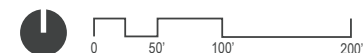


Concept Plan rendering





Concept Plan Alternative 1







Concept Plan Alternative 2





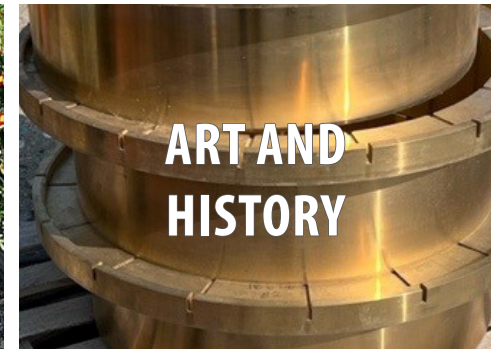


Proposed park aerial rendering

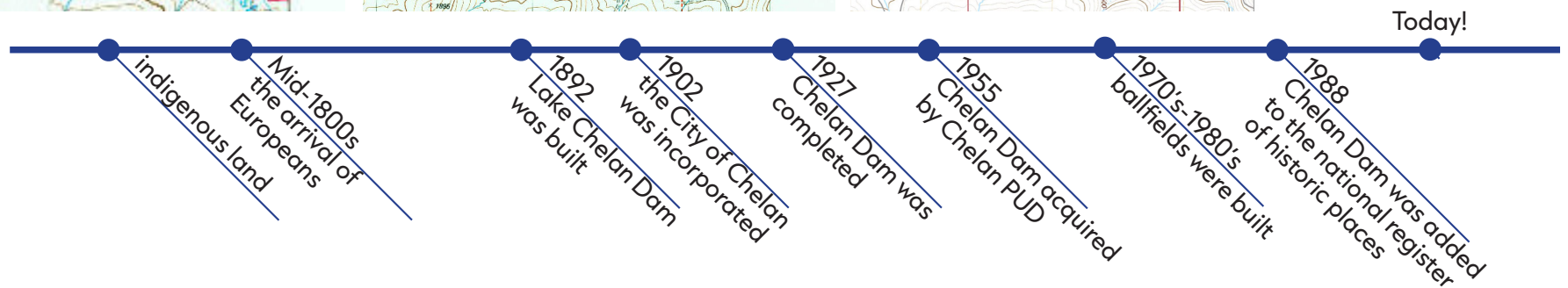
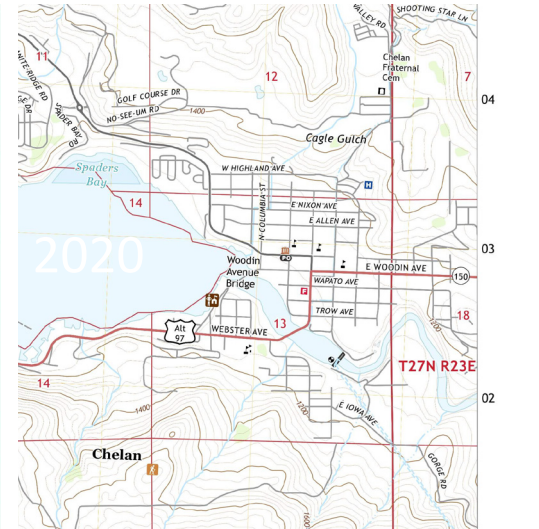
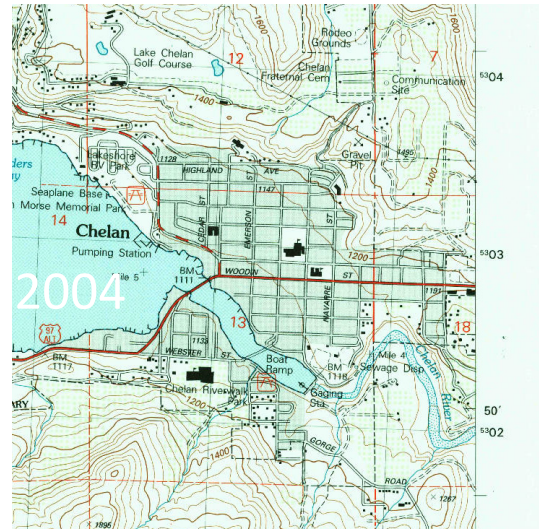
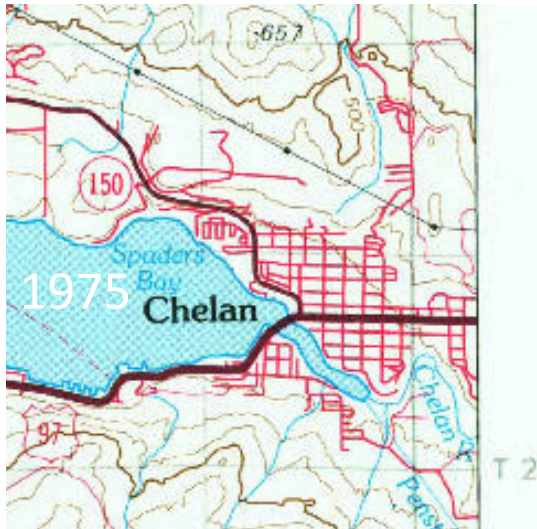
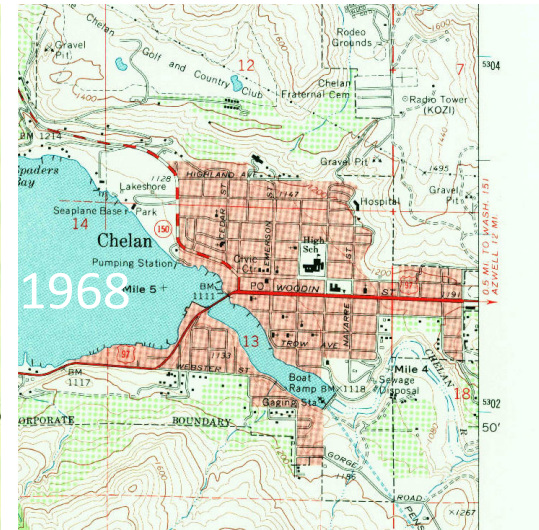


**Park Amenities** along the paths create a diverse experience. Nodes include playgrounds and play elements (possibly including water play!), shelters, benches, exercise equipment, and a community garden &/or orchard near the Food Bank. A dog park is proposed at this location using temporary fences, becoming permanent if popular. Throughout the park, new trees are integrated to provide comfort during Chelan's hot and windy summers, and native plants provide interest and habitat.

The Chelan PUD is a partner in this project, requiring access to their adjacent dam; hydroelectric relics are proposed to be integrated along the paths to call to the hydropower history of the region. With further coordination, trail access down to Chelan River may be possible in the future.

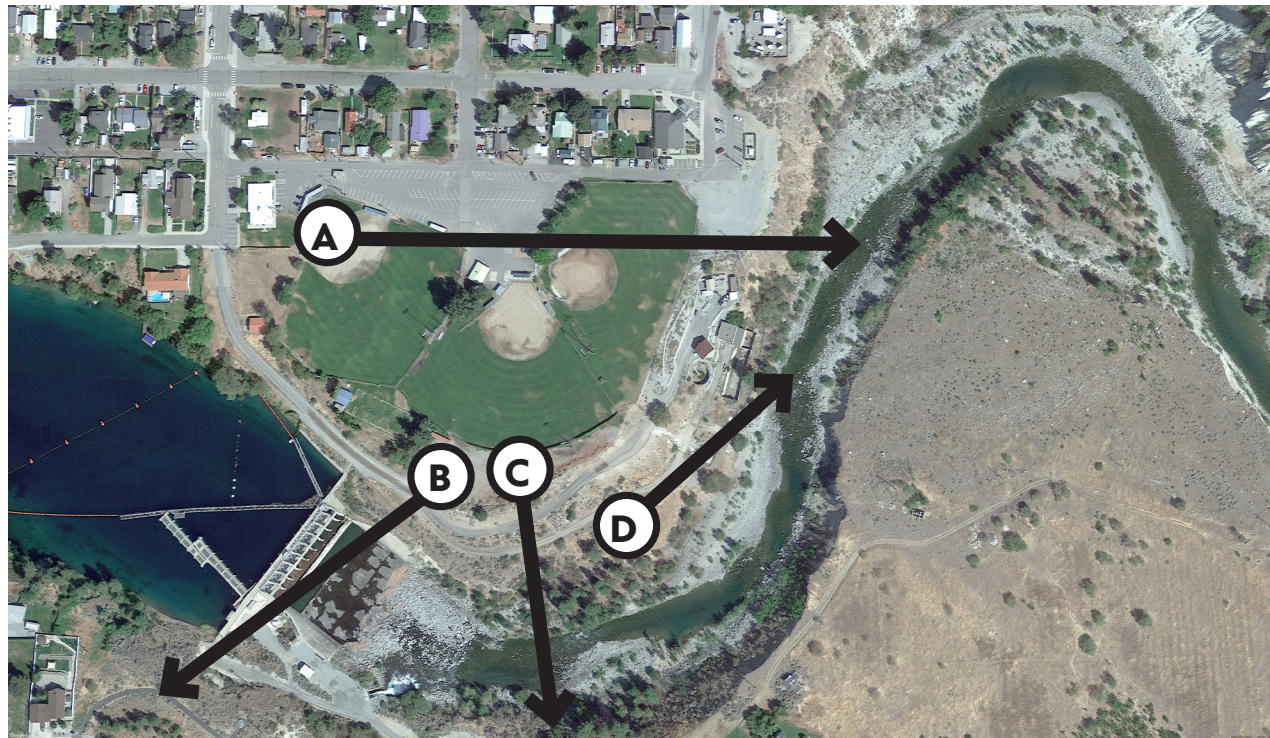






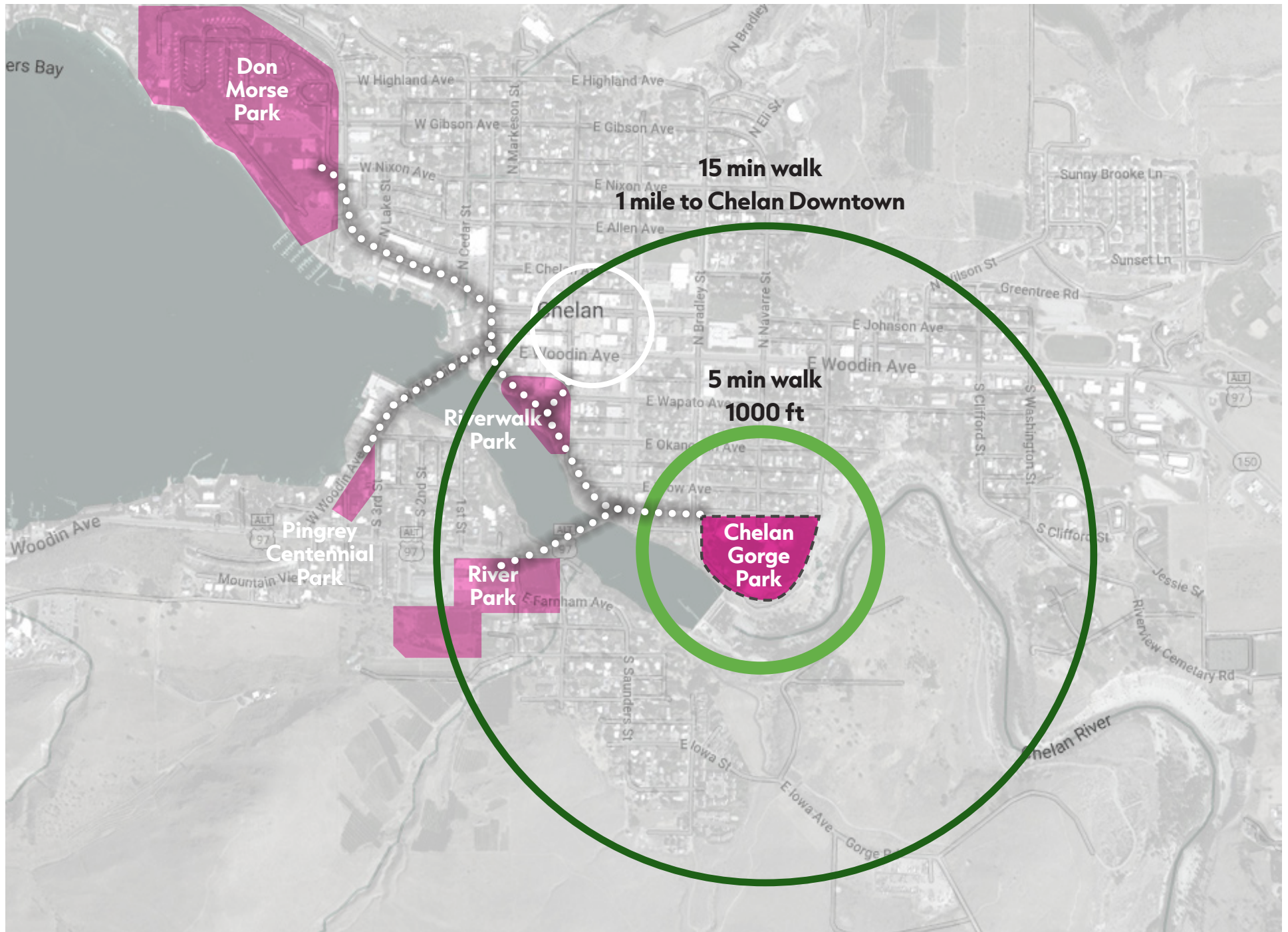
The park has an interesting and rich history to celebrate.





The park has wonderful views to the surrounding buttes (A, C), Chelan River (D), Lake Chelan, and Chelan Dam (B).





The park's great connections to nearby parks and downtown.



Chelan has a long baseball tradition

